

**圣奥总部**

中国·杭州市钱江新城市民街 200 号圣奥中央商务大厦

**Headquarters**

Sunon Central Business Building, No.200 Citizen Street,  
Qianjiang CBD, Hangzhou, Zhejiang, China  
TEL: +86 571 88166666 +86 571 87171168 PC: 310020

**萧山生产基地**

中国杭州市萧山经济技术开发区宁东路 35 号

**Xiaoshan Manufacturing Base**

No.35 Ningdong Road, Xiaoshan Eco&Tech Zone, Hangzhou, Zhejiang, China  
TEL: +86 571 82833568 PC: 311200

**海宁生产基地**

中国浙江省海宁市尖山新区安仁路 6 号

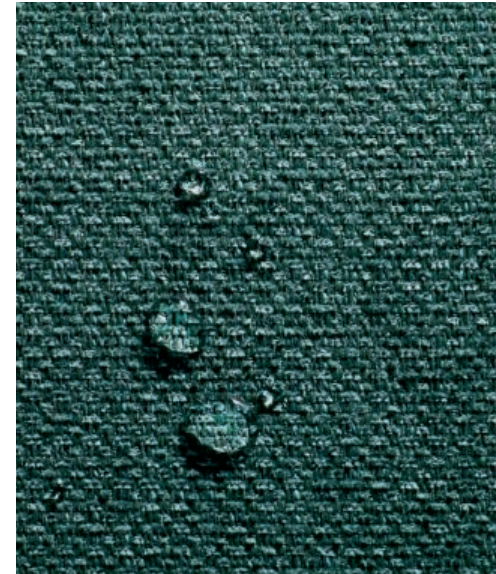
**Haining Manufacturing Base**

No.6 Anren Road, Jianshan New Area, Haining, Zhejiang, China  
TEL: +86 573 87800900 PC: 314415



V1-201809P1-3000





雨过初晴，晶莹的雨珠沿着荷叶边缘滚落，不沾不留痕——精选美国杜邦纳米技术面料，源于大自然中荷叶防水效应，独特分子屏障结构，防止水渍、果渍、油污渗入纤维里层，轻轻擦拭 10-20 秒，空间焕然一新！

The sky clears up after the rain, and the crystal raindrops roll down along the edge of lotus leaves, leaving no traces. Inspired by the waterproof lotus leaf, the nanotechnology of DuPont fabrics, with its unique molecular structure, easily prevents water, fruit juice or oil from seeping into the fiber. To get a brand-new look, just gently wipe for 10-20 seconds.



26 个英文字母，随意排列，变幻成包罗万象的语言；  
 灵活的模块沙发，随意增减单元，重组出多变姿态！

Just like the 26 English letters could transform into an all-encompassing language with different combinations.  
 The flexible modular sofa could also get easily assembled to create different look.







落地模块，拼装出慵懒随意的气质；时尚拉线设计，勾勒出视觉立体感；选配金属下脚，搭配一只松软靠垫，便有了家的气息，给你舒适的依靠。

Create a home sensation in seconds: assemble the modules at your will, pair them with metal legs and select some soft cushions. Easy, cozy, lazy, the feeling of home.







像俄罗斯方块一样,即可单独存在,又能团队协作,摒弃大沙发的铺陈与臃肿,充分利用每一寸空间。

Like Tetris, Flower 6 can stand alone or cluster together, making the most of every inch in the space, hence getting rid of clumsiness of big sofas.



一体式沙发占据大量空间，并限制你随意变换外观，模块化沙发是实用且迷人的解决方案。无论单人座、双人座、三人座或四人座，还是排成一排或转角，发挥想象，来点不一样！

One-piece sofa takes up too much space and limits the possibility to change the look. Compared to that, modular sofa is a more practical and fascinating solution. Make it single, double, triple or quadruple or line a few up in a row: just use your imagination to make a difference.







专属吸音降噪材质屏风，侧边斜切工艺，  
无需厚重墙体堆砌，即可分隔出一方私密天地，  
隔离干扰同时不影响空气流通，茶歇、洽谈、休憩，舒畅进行。

Exclusive sound-absorbing and noise-reducing screen with beveled  
edge process creates a private world, only without thick and heavy  
walls. The intimate space allows ample air circulation, and is an  
ideal place for tea break, small talk or a little rest.





将头脑风暴比作一场地壳运动，  
在工作中心地带之外另辟一片创意小岛，交汇所有灵感。  
多功能储物柜作隔断，静态办公、动态交流随心切换。

The agile working environment could bring more communication and inspiration. Create a partition with the multi-functional cabinet, and you would see independent work and interactive exchange could efficiently happen in the same space.



## 公共空间： 不定期的话题沙龙

直线条的耿直，是内心的法则；  
曲线条的圆融，是处世的姿态。  
打破格子间受限的空间，  
不定期组织一场话题沙龙，  
这里的话题更加开放、自由，  
欢迎你随时加入进来。

Linear or curved: arrange the modules  
any way you like. Flower 6 helps you  
break the boundaries between different  
teams and enjoy the open-mindedness  
and freedom in this communication hub.







# TRAINING SPACE: EXPERIENCE THE JOY OF LEARNING

## 培训空间： 感受学习的快乐

阶梯、角落、白板，还原培训的场景，三五成群，坐躺皆宜，学习也可以成为一种乐趣。

With Flower 6, one could build training scenes with stairs, corners and a mere whiteboard. Either sitting or lying down, you could enjoy learning anywhere.





# PUBLIC SPACE: UNOBSTRUCTURED VIEW

公共空间：让空间没有阻挡感

多元化世界，技术飞速迭代，我们需要更加灵活以致用的家具，而不是千篇一律的工业化产物。让空间更加开放、多元、没有阻挡感，跟上日新月异的时代。

Instead of same old cliché, now we are looking for furniture that are flexible and agile. Let the space be more open, diverse and unconstrained to keep us up with this ever-changing time.

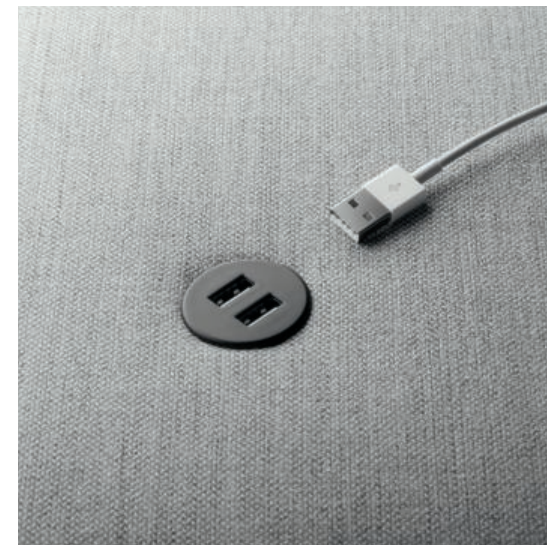




## 接待空间： 用色彩点亮心情

色彩，是无形的调和剂，  
不仅让一个空间富有活力，  
而且让洽谈、等候的心情变美丽。

Colors, like an intangible conditioner, not  
only make the space vibrant, but also lift  
your mood instantly.







灵活组件 贴心细节  
Flexible Components,  
Considerate Details

多功能收纳盒，置物与绿植兼得；  
可随意搬挪的茶几，品茗更便利。

The multi-functional storage box is for  
both private storage and potted plants,  
and the movable coffee table adds more  
convenience for tea break.



## 沙发 / Sofa



**SHL30.1.MR**  
W650\*D650\*H720(mm)



**SHL31.1.MR**  
W650\*D650\*H420(mm)



**SHL32.1.MR**  
W870\*D680\*H420(mm)



**SHL40.1.MR**  
W650\*D650\*H480(mm)



**SHL41.1.MR**  
W650\*D650\*H180(mm)



**SHL43.1.MR**  
W120\*D650\*H340(mm)



**SHL42.1.MR**  
W500\*D500\*H400(mm)



**SHL33.2.MR**  
W1000\*D1000\*H720(mm)

## 沙发 / Sofa



**SHL30.1.MR**  
W650\*D650\*H720(mm)



**SHL31.1.MR**  
W650\*D650\*H420(mm)



**SHL32.1.MR**  
W870\*D680\*H420(mm)



**SHL40.1.MR**  
W650\*D650\*H480(mm)



**SHL41.1.MR**  
W650\*D650\*H180(mm)

## 屏风 / Screen



**SHL47.L/R.MR**  
W650\*D30\*H1180(mm)



**SHL46.1.MR**  
W650\*D30\*H1180(mm)



**SHL46.2.MR**  
W980\*D30\*H1180(mm)



**SHL48.2.MR**  
W1300\*D250\*H1410(mm)



## 多功能盒 / Multi-functional Container



**SHL44.1.MR+SHL59**  
W280\*D650\*H390(mm)



**SHL44.2.MR+SHL59**  
W280\*D650\*H920(mm)



**SHL45.2.MR+SHL59\*2**  
W280\*D1170\*H920(mm)

## 茶几 / Coffee Table



**SHL53.1**  
W640\*D650\*H150(mm)



**SHL52.1**  
W640\*D325\*H150(mm)



**SHL51.1**  
W640\*325\*H450(mm)



**SHL56.1**  
W640\*D325\*H26(mm)



**SHL54.1**  
W640\*D650\*H266(mm)



**SHL55.1**  
W562\*D640\*H266(mm)

## 屏风 / Sofa Legs



**SHL50.1**  
W592\*D592\*H240(mm)



**SHL50.1B**  
W917\*D592\*H240(mm)



**SHL50.2**  
W1242\*D592\*H240(mm)



**SHL50.2B**  
W1567\*D592\*H240(mm)



**SHL50.3**  
W1892\*D592\*H240(mm)

## 可选配置 / Accessories



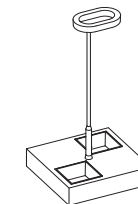
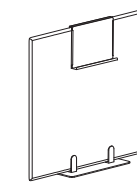
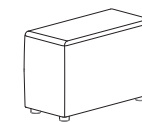
**SHL49.1.MR**  
W600\*D280\*H10(mm)



**SHL57**  
W485\*D382\*H88(mm)



**SHL58**  
W290\*D165\*H1220(mm)



材质 / Material



SM-SF35B



SM-SF42B



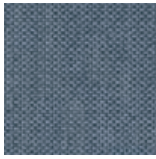
SM-SF62B



SM-SF65B



SM-SF50B



SM-SF80B



SM-SF81B



SM-SF 系列



TM-VI42B



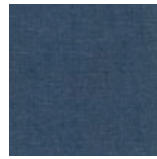
TM-VI50B



TM-VI64B



TM-VI82B



TM-VI81B



TM-VI90B



TM-VI30B



TM-VI29B



TM-VI21B



TM-VI27B



TM-VI1B



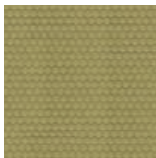
TM-VI10B



TM-VI 系列



SM-HF40H



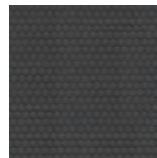
SM-HF50H



SM-HF83H



SM-HF81H



SM-HF27H



SM-HF 系列